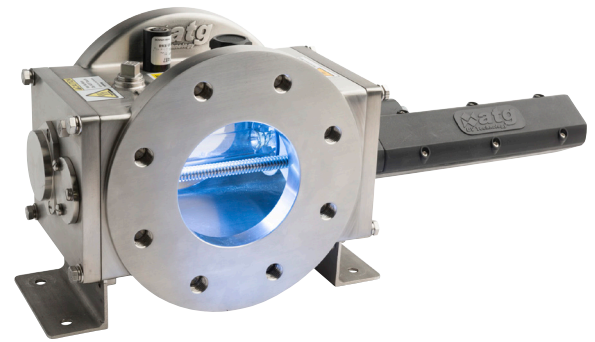


## WAFER® UV SYSTEM ULTRAVIOLET DISINFECTION SYSTEMS



### GENERAL INFORMATION

The Wafer® UV system differs from any other currently on the market with a unique chamber making it the most compact UV system available today, at about one third the size of comparative offerings. With a significantly reduced installation and maintenance envelope, the Wafer system offers an easy to install and retrofit solution that will fit into the smallest of plant rooms.

The Wafer system represents the most compact UV solution available. It features a hydraulically optimised design that provides efficient treatment of chlorine resistant pathogens such as cryptosporidium, as well as the benefits from reduction of combined chlorine delivering a more pleasant and safer environment for pool users. The elimination of combined chlorines not only reduces the strong odor associated with swimming pools, it also protects the structure from the corrosive effects these chemicals can have.

The Wafer system is tested to and is compliant with the latest regulatory requirements, giving installers and operators the knowledge that they are providing not only the most efficient solution, but a fully compliant one.

The Wafer® system also includes a number of advanced features. The automatic wiper and Twistlok™ lamps are designed to reduce maintenance intervals and to ensure that any maintenance is simpler and faster to undertake, and is as safe as possible.

The Wafer also features the Spectra 3 controller. Utilising the latest electronic power supplies the Spectra 3 is now more compact and simpler to operate. It includes full integration to any BMS system utilising several configurable inputs and outputs, plus the facility to connect to any MODBUS or PROFIBUS network.

### SPECIFICATIONS

- Smaller installation footprint
- Horizontal or vertical installation
- Efficient and enhanced power control
- Higher performance
- Simpler & faster to maintain
- Increased safety
- Modbus® connectivity

Features	Standard Chamber Specification	Options
Lamp Life	9,000 Hours	
Lamp design	TWISTLOK™ Quick Release, Enhanced Safety-Medium Pressure	
Lamp and Wiper Access	Single Ended Access	
Design Pressure	10 Barg Design (15 Barg Test)	
Number of Sensors	1-off (2-off for model WF-430-12)	
Variable Power	100% to 30% Power (Automatic Dose Pacing)	
Connection Type	PN10 Flanged (EN1092-1-BS4504)	PN16 Flanged (EN1092-1-BS4504), ANSI 150, AS 4087 (PN16), JIS B2220 - 10K
Generator Material	316L Stainless Steel	Superduplex (25Cr) Stainless Steel
Internal/External Finish	Electropolished	
Internal Surface Finish	3.2 Ra	
Quartz Type	High Purity Quartz Sleeves	TiO2 Doped quartz
Mounting	Fixed Brackets	
Cleaning system	Automatic Wiper System	
Temperature Probe	AT-487 (PT-100)	
Vent Port	1/2" BSP (Air Release Valve supplied for horizontal installations)	
Drain Port	1/4" BSP	
Sacrificial Anode—COMPONENT EXTRA	N/A	N/A
Ingress Protection (UV Chamber)	IP55	
Installation	Horizontal or Vertical (Lamps must be Horizontal)	

Features	Standard Control Panel Specification	Options
Material	Epoxy Coated Mild steel - RAL 7035	Stainless Steel (304)
Control Type	Spectra 3 Microprocessor	
Power supply	Electronic Ballast	
Ingress Protection	IP54	
Ventilation	Forced Air cooled (Fan)	
Interface	Spectra Membrane	Spectra Touch
Communication	Modbus (RS-422 / RS-485)	Profibus DP
Protection	Door Locked Isolator	
Operating Temperature	Max Working Ambient +45°C	
Digital Inputs	3-off selectable	Additional 3-off selectable
Digital Outputs	3-off selectable	Additional 3-off selectable
Analogue Inputs	1-off selectable	Additional 1-off selectable
Analogue Outputs	1-off selectable	Additional 1-off selectable

12, Dana Estate, Transfesa Rd, Paddock Wood, Kent TN12 6UT

**+44 (0) 300 124 0500** [evoqua.com](http://evoqua.com)



Wafer and Twistlok are trademarks of Evoqua Water Technologies LLC, its subsidiaries or affiliates, in some countries.

All information presented herein is believed reliable and in accordance with accepted engineering practices. Evoqua makes no warranties as to the completeness of this information. Users are responsible for evaluating individual product suitability for specific applications. Evoqua assumes no liability whatsoever for any special, indirect or consequential damages arising from the sale, resale or misuse of its products.

© 2021 Evoqua Water Technologies LLC Subject to change without notice DS-WAFER-EN-PS-0121