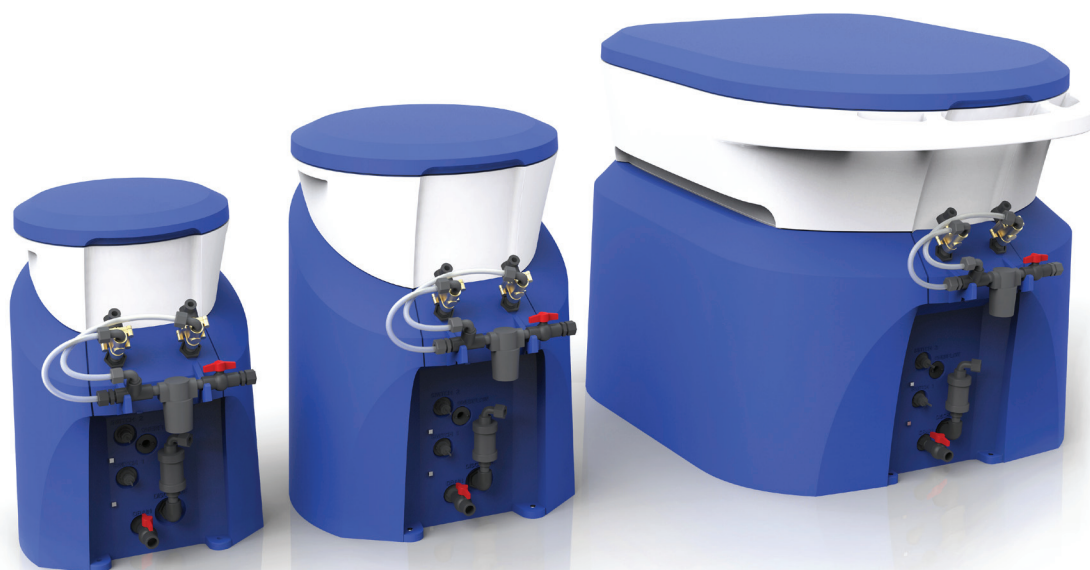




chlorination evolved



45 140 500 FEEDERS
NEW DESIGN HIGH EFFICIENCY

Made in the U.S.A.



chlorination evolved

New design! Highly efficient!

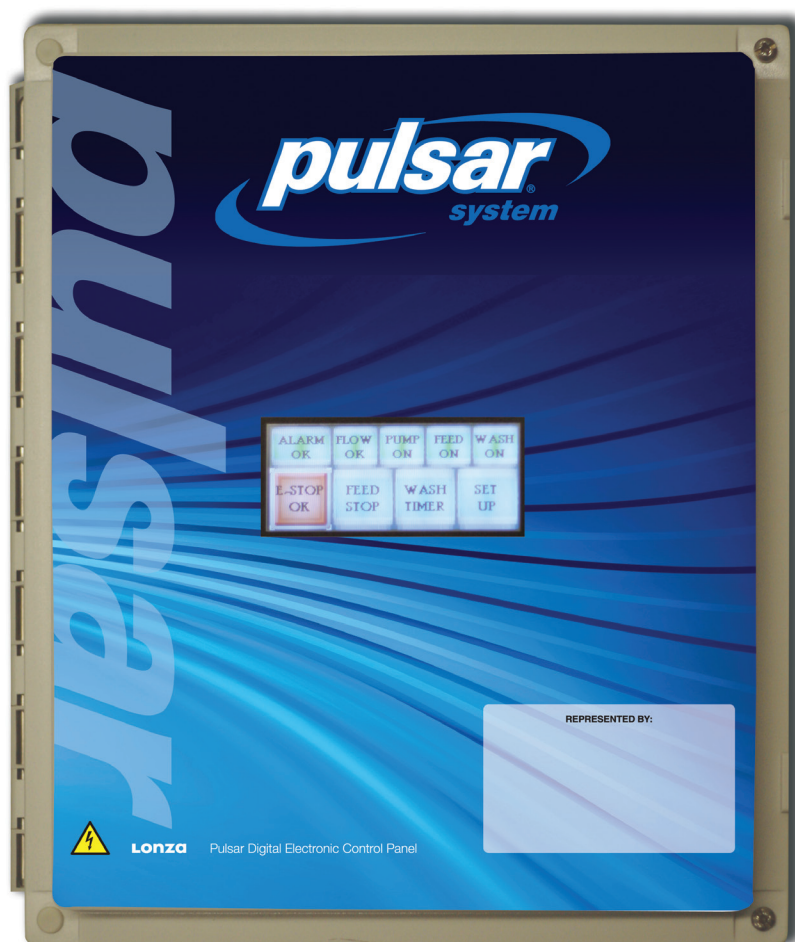
- ▶ Based on feedback from customers
- ▶ PLC driven control box with touchscreen controls
- ▶ Booster pump control option reduces energy consumption.
- ▶ Improved serviceability and reduced maintenance
- ▶ Improved carbon footprint
- ▶ Automated cleaning features
- ▶ Downstream Venturi injection

DESIGNED WITH CUSTOMER FEEDBACK



chlorination **evolved**

CONTROL BOX



- ▶ PLC based
- ▶ Touchscreen interface
- ▶ USB port for updating software and transferring data to computer
- ▶ Controls booster pump for optimal performance and efficiency
- ▶ Calculates individual pool/spa LSI

Pulsar Feeders 45, 140, 500

NEW DESIGN HIGH EFFICIENCY

With the Pulsar® System chlorinator remarkable water clarity color and sparkle are as easy to achieve as they are to enjoy. The Pulsar System reduces the hazards of chlorine gas and liquid bleach, protects plaster and equipment and reduces chloramine odors . The Pulsar feeder chlorinates, removes organics and metals, boosts hardness and shock treats, all in one simple process. Pool water that's balanced using the Pulsar System is clean and clear with less hassle, leading to longer pool and equipment life.



Model 45 Specifications

Chlorinator height 31" [78.7cm]
Chlorinator weight (full) 55 lbs [24.9kg]
Chlorinator weight (empty)..... 30 lbs [13.6kg]

Capacity:

25 lbs [11.3kg] Pulsar® Plus Dry Chlorinator
Briquettes (equivalent to 17 lbs [7.7kg]
available chlorine)

Feed Rate:

Pulsar® Plus Briquettes: 2-58 lbs
[1.5-22.7kg] of Available Chlorine per day (Pool)
[3-66kg] of Available Chlorine per day (Spa)

Recommended Pool Size*:

5,000-100,000 gallon [18,927-378,541 liter]
un-stabilized¹
50,000-150,000 gallon [189,271-567,812 liter]
stabilized¹

*Subject to local health codes

Model 140 Specifications

Chlorinator height 35" [88.9cm]
Chlorinator weight (full) 150 lbs [68.0kg]
Chlorinator weight (empty)..... 50 lbs [22.7kg]

Capacity:

100 lbs [45.4kg] Pulsar® Plus Dry Chlorinator
Briquettes (equivalent to 68 lbs [30.8kg]
available chlorine)

Feed Rate:

Pulsar® Plus Briquettes: 5-163 lbs
[2.3-63.5kg] of Available Chlorine per day

Recommended Pool Size*:

15,000-200,000 gallon [56,781-757,082 liter]
un-stabilized¹
50,000-600,000 gallon [189,271-2,271,247 liter]
stabilized¹

*Subject to local health codes

Model 500 Specifications

Chlorinator height40" [101.6cm]
Chlorinator weight (full) 465 lbs [210.9kg]
Chlorinator weight (empty)..... 165 lbs [74.8kg]

Capacity:

300 lbs [136.1kg] Pulsar® Plus Dry Chlorinator
Briquettes (equivalent to 204 lbs [92.5kg]
available chlorine)

Feed Rate:

Pulsar® Plus Briquettes: 25-486 lbs
[11.4-266.8kg] of Available Chlorine per day

Recommended Pool Size*:

50,000-600,000 gallon [189,250-2,271,000 liter]
un-stabilized¹
100,000-1,600,000 gallon [378,500-6,056,000 liter]
stabilized¹

*Subject to local health codes





Patented Spray Technology:

- ▶ Consistent high strength solution of 2.0% AvCl on demand
- ▶ Uniform dissolution of briquette bed
- ▶ Uses 68% AvCl Pulsar briquettes

Improved Serviceability:

- ▶ All internal components easily accessible
- ▶ All external components mounted in front
- ▶ Removable solenoid assembly
- ▶ Quick disconnect fittings
- ▶ Common components across feeder line

Less Maintenance:

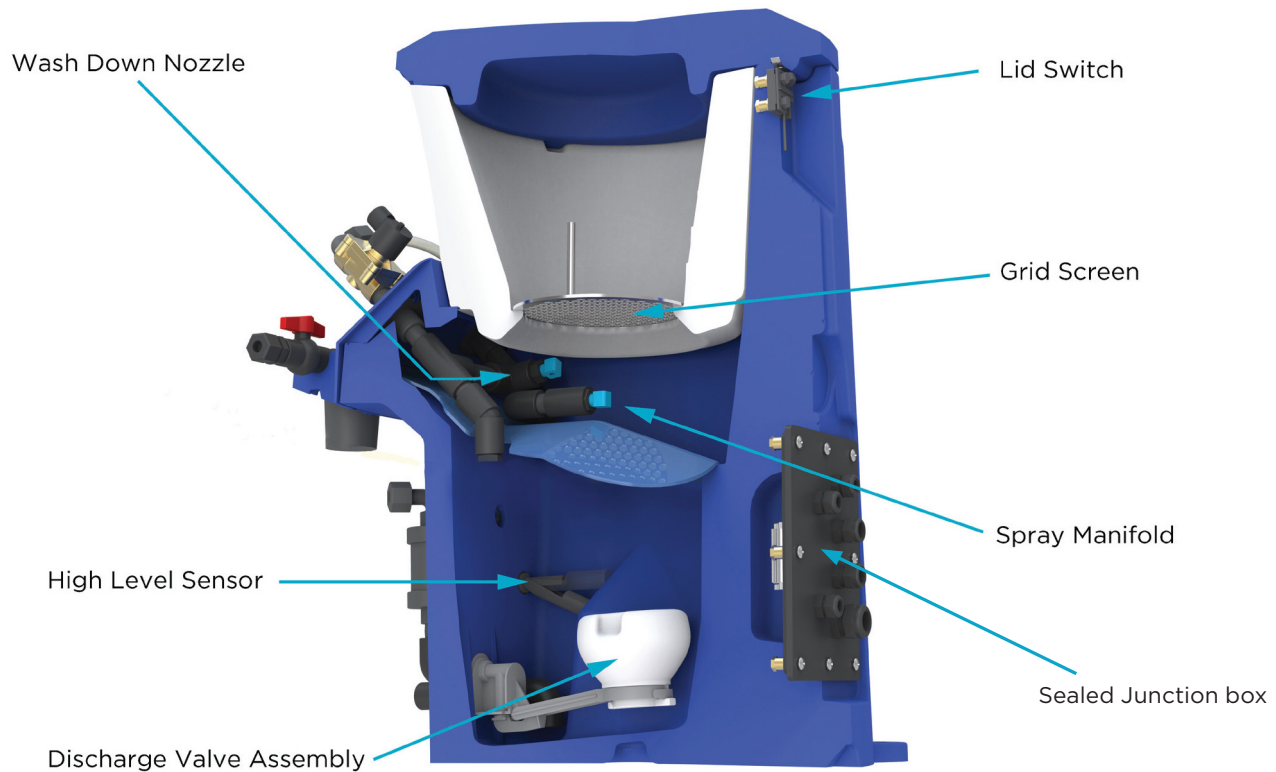
- ▶ Automated wash down logic
- ▶ Optional dilution feature
- ▶ Improved discharge valve
- ▶ Minimal solution reservoir

Improved Equipment Safety:

- ▶ Lid switch
- ▶ Overflow prevention system
- ▶ Sliding hopper (P500 only)
- ▶ Seismic zone compliant



Pulsar System



Cut-away view: The new design of the Pulsar® family of feeders has many new features to decrease maintenance and increase reliability. The water from the pool enters the Pulsar® Chlorinator via the inlet port. The spray manifold then distributes the water onto the briquette grid creating a chlorinated solution. The chlorinated solution falls into the discharge tank and is discharged into the pool recirculation system by the evacuation system. Water flow in the unit is designed to remove residue from the chlorinator base. A smaller reservoir with an updated discharge valve arm allows for a more reliable and accurate dosing method. The automatic wash down nozzles and the well agitator nozzle spray after the unit is done feeding to clean the inside of the Pulsar feeders. This is controlled by the Pulsar Control Box logic.

chlorination evolved

Pulsar® Plus Briquettes

Chemical Properties

Available chlorine (% by weight)

65.0

-

Water (% by weight)

4.0

8.5

Iron (% by weight)

-

0.05

Oxides, heavy metals & AL

(% by weight)

-

0.5

Scale inhibitor (% by weight)

0.4

1.0

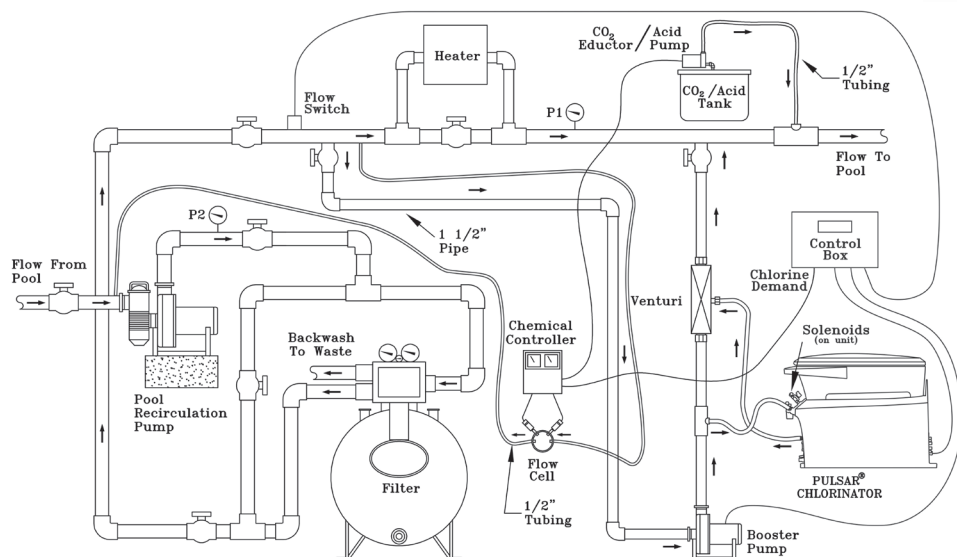
Weight (grams)

6.5

7.5

Dimensions (mm)

Approx. 32 x19x13



Ph: 0438-889268

www.tbwsaquatic.com.au

lonzawatertreatment.com

Lonza