

# ADVANCED WATER CHEMISTRY CONTROL

# BECSys5

- Versatile** Suitable for pools, spas, water parks, fountains, zoos and aquariums
- Efficient** Reduces chemical usage, improves water quality and assures compliance
- Flexible** Advanced control features can be fine-tuned to meet the most challenging applications
- Expandable** Comprehensive expansion options to accommodate every application
- Complete** Standard configuration includes sensors, flow cell and safety features



- Secure** Multi-level, traceable password-protection for peace of mind
- Reliable** 5 year electronics / 2 year sensor warranty provides worry-free operation
- Easy-to-use** On-screen help intuitively guides the user through configuration options
- Supported** Factory-trained service and support



Certified to  
NSF/ANSI Standard 50



# ADVANCED WATER CHEMISTRY CONTROL

## Stay Connected - Stay Informed

- Standard, integral 100BaseT Ethernet port
- Optional 56k data/fax modem
- RS232/USB PC connection port
- Connect wirelessly through BECSysRF 900MHz spread-spectrum link
- Choose to receive alarm notification by email, text message, pager and/or fax.

## Simply easy to use

- Dedicated front-panel buttons for quick access to common operations
- Clear status and alarm indicators
- Intuitive menus with on-screen help



## Powerful Application Features

- Patent-pending VFD control interface
- Flowmeter monitoring and display
- Monitor Total Dynamic Head (TDH) of circ pump
- Free chlorine/bromine readings with bracketed control
- Turbidity, TDS monitoring, display and control
- Monitor chemical inventory levels
- Auto-fill and much more

## Product Certifications

- NSF Certified to NSF/ANSI Standard 50
- ANSI/UL 61010-1 (ETL Listed)
- CAN/CSA C22-2 #61010-1 (ETL Listed)
- CE: EN 61010-1, EN 61326

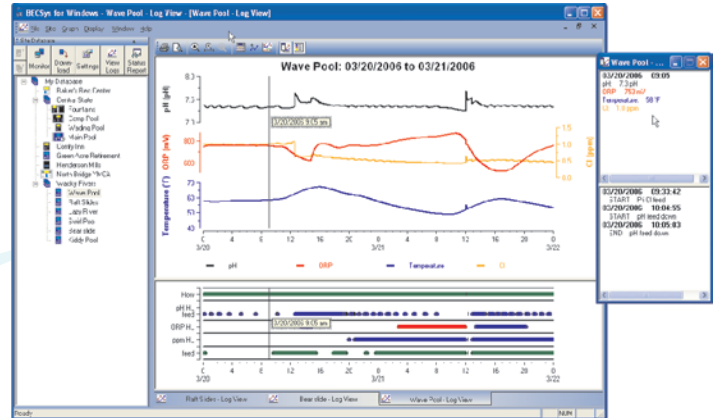
## About BECS Technology

BECS Technology, Inc. has been designing and manufacturing the industry's most reliable and innovative water chemistry controllers for over 20 years. All systems are designed and manufactured in-house at our facility in St. Louis, Missouri. Visit us online at [www.becs.com](http://www.becs.com).

**Designed and Manufactured in the USA by:**



**BECS Technology, Inc.**  
 9487 Dielman Rock Island Industrial Drive  
 Saint Louis, Missouri 63132 USA  
[www.becs.com](http://www.becs.com)  
[BECSysinfo@becs.com](mailto:BECSysinfo@becs.com)  
 (314) 567-0088  
 (314) 567-0610 fax



## Monitor and Analyze

- BECSys for Windows included
- Windows 7 compatible PC software
- Intuitive Graphical Analysis Tools
- Full read/write access to all parameters

## Advanced Sensor Technology

- State of the art design
- Inorganic electrolyte (32ml)
- 2-year warranty
- Free & combined chlorine monitor/ control options
- Low maintenance free chlorine sensor



Windows is a registered trademark of Microsoft Corporation in the United States and other countries.

SLS-4333-CDR Rev E

## Distributor - Australia & New Zealand

**TIM BATT WATER SOLUTIONS** Pty Ltd  
 PO Box 288  
 Balgowlah NSW 2093  
 Sydney, Australia  
 Phone: (02) 99484177  
 Fax: (02) 99070014  
 Mobile: (0438) 889268  
 E-mail: [timtbws@bigpond.com](mailto:timtbws@bigpond.com)

